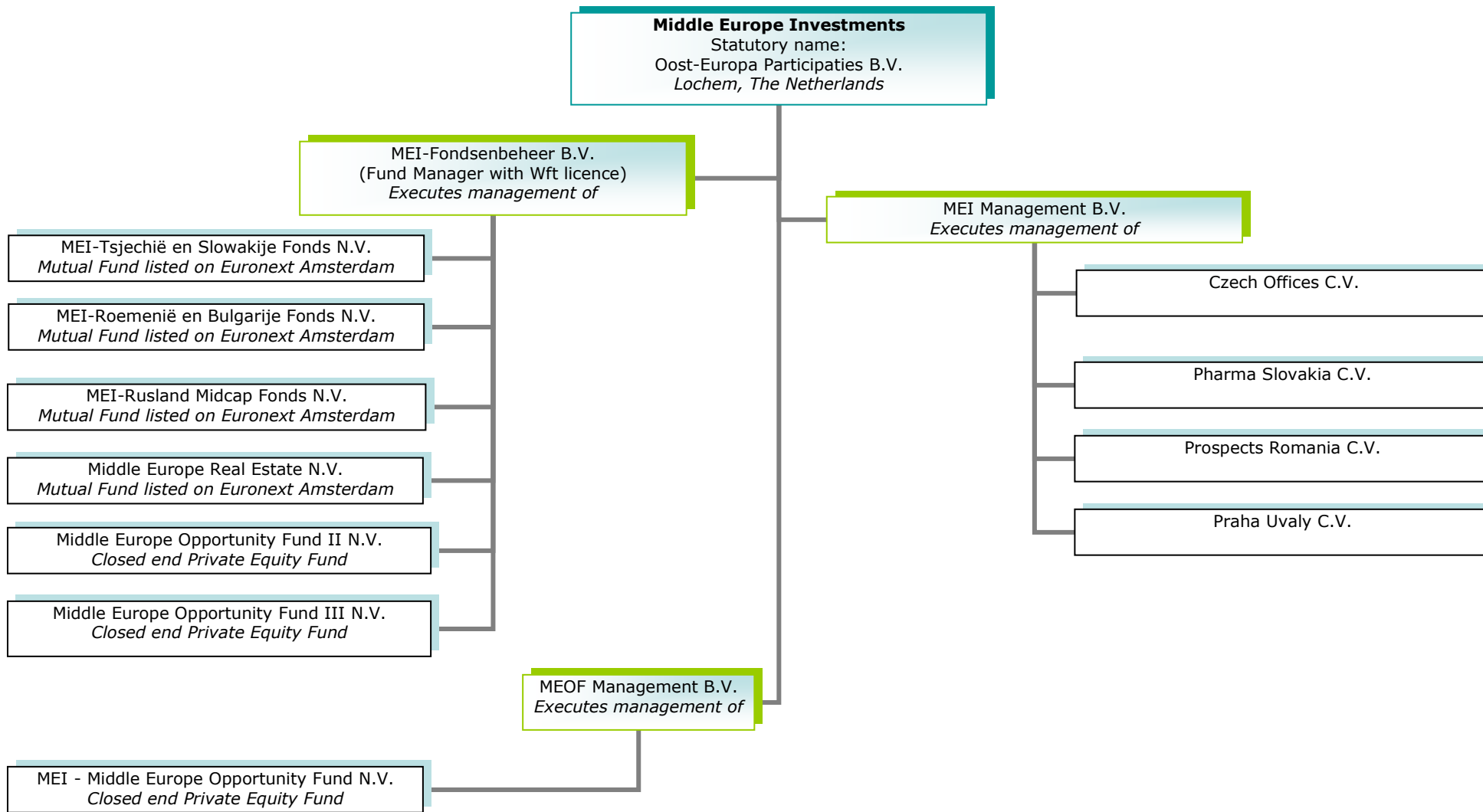


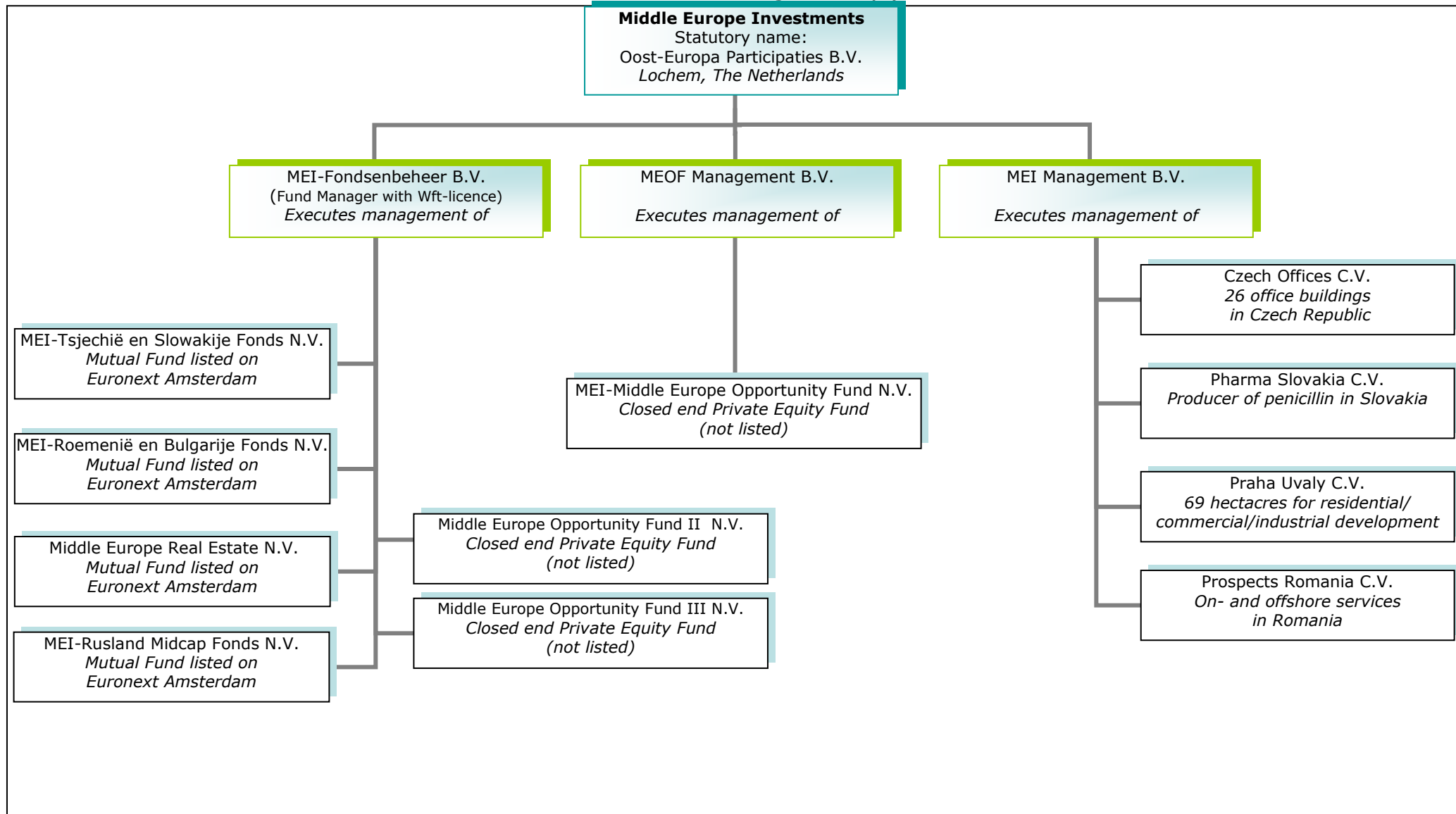
# ORGANISATION STRUCTURE MIDDLE EUROPE INVESTMENTS

## Funds under management (1)



## ORGANISATION STRUCTURE MIDDLE EUROPE INVESTMENTS

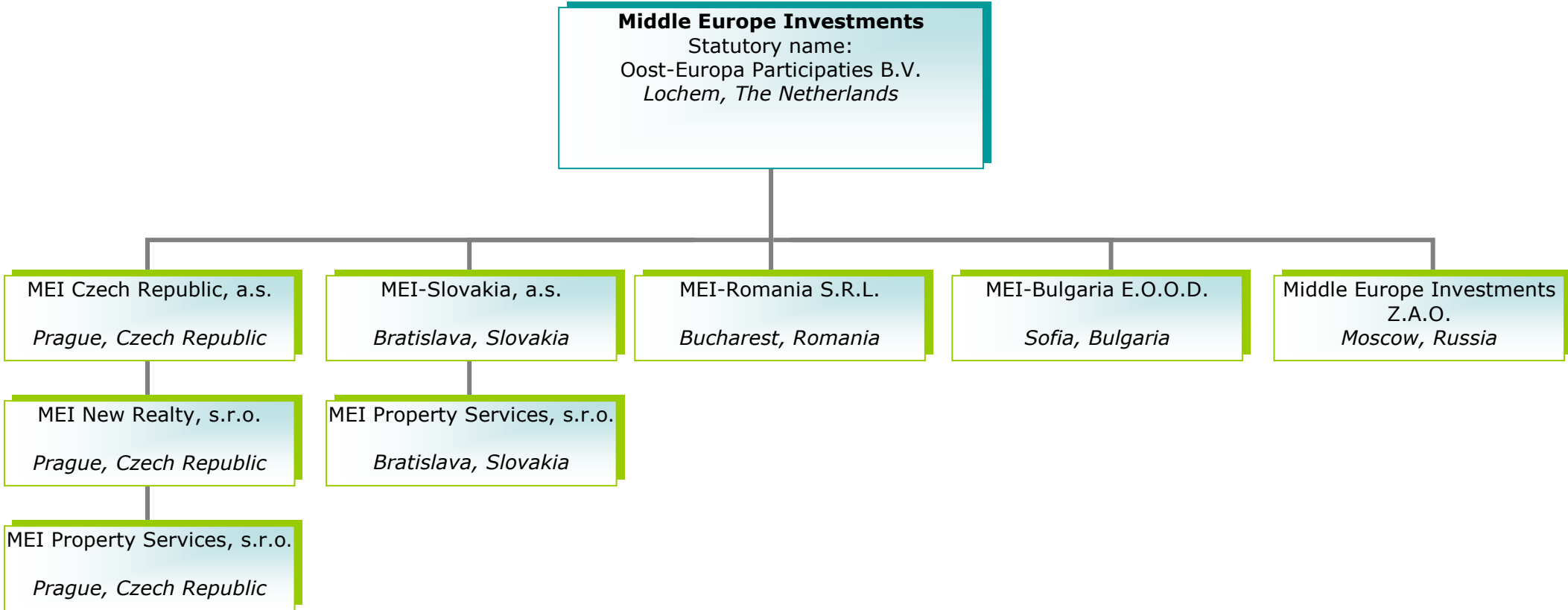
### Funds under management (2)





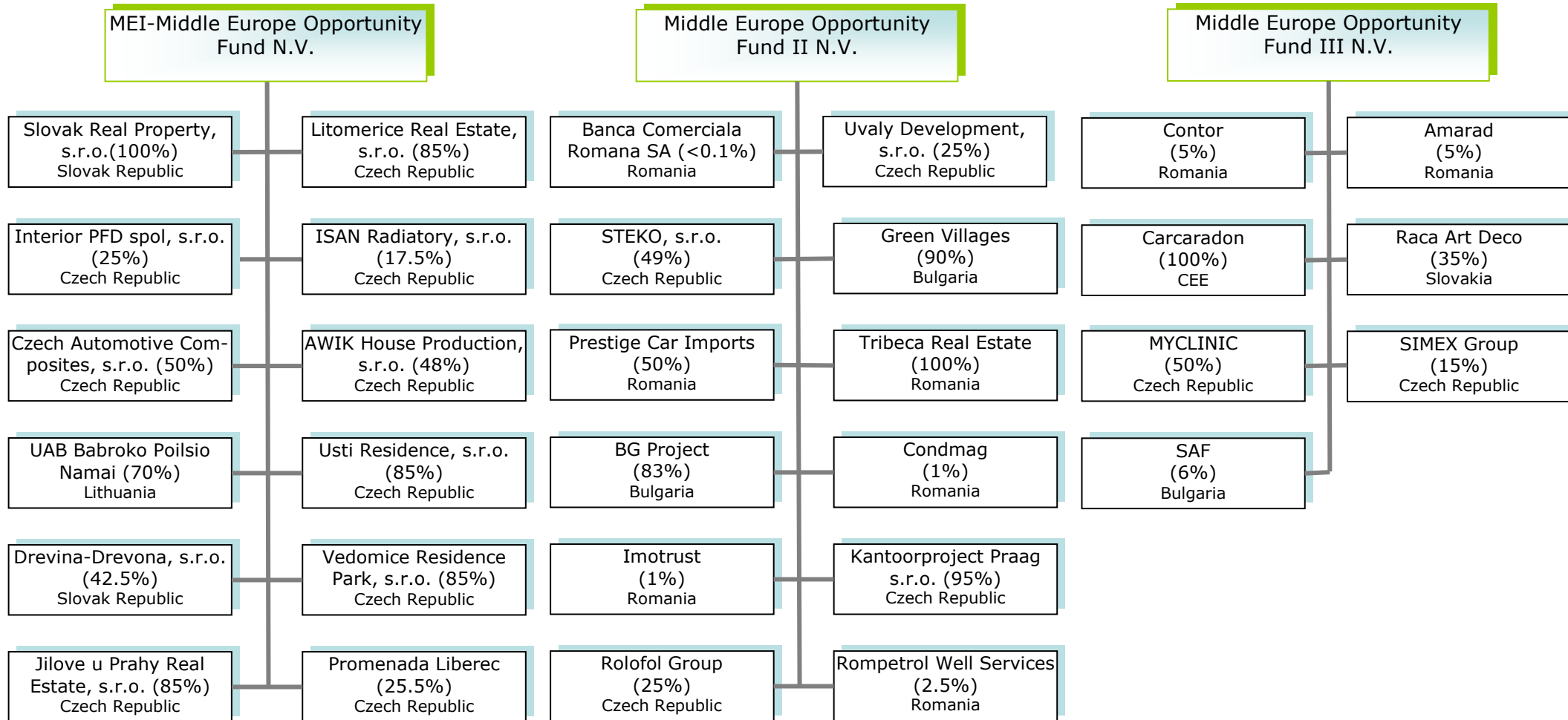
# ORGANISATION STRUCTURE MIDDLE EUROPE INVESTMENTS

## Overview of local offices





## ORGANISATION STRUCTURE MIDDLE EUROPE INVESTMENTS



Overview of MEOF investments

## ORGANISATION STRUCTURE MIDDLE EUROPE INVESTMENTS

### Overview of staff

<p>Middle Europe Investments a.s. Bratislava, Slovakia</p>	<p>MEI-Czech Republic as. Prague, Czech Republic</p>	<p><b>Middle Europe Investments</b> Lochem, The Netherlands (Headoffice)</p>	<p>MEI-Romania S.R.L. Bucharest, Romania</p>	<p>MEI-Bulgaria E.O.O.D. Sofia, Bulgaria</p>	<p>MEI-Russia Z.A.O. Moscow, Russia</p>
<p>Krajci, Dusan (Manager) Migalova, Dominika</p>	<p>Horák, Tomáš (Manager) Bauerova, Alena Cahová, Miroslava Hronová, Erika Jireš, Jan Lisá, Jana Pecháčkova, Martina Petr, Michael Sanitrník, Michael Simek, Jan Smehyl, Peter Špicáková, Šárka Štecher, Vojtěch Tomaníková, Eva Winkelmanová, Lenka</p>	<p>Rooy de, Richard (Managing Partner) Winkelman, Peter (Managing Partner) Draskovic, Peter (Director) Mars, Peter (Director) Blokland van, Marike Dijkers, Michiel Haasjes, Peter Kluyvers, Jan Willem Meer van der, Christiaan Menheere, Albregt Nahuis, Mathijs Poelakker, Monique Poot, Jean- Michel Scheeren, Florian Schreur, Lyannne Visscher, Hilbert Wijnans, Karin Zeeburg van, Marleen</p>	<p>Fäder, Cristian (Manager) Grosaru, Elena Ivan, Robbert Cristian Marius, Chis Vasile Onea, Alexandra Cristina Pasculescu, Costin Virgiliu Popescu, Cristina Stroescu, Ana Maria</p>	<p>Dimitrova, Nora Kostadinov, Kaloyan Madjarov, Spassimir Petkov, Miroslav</p>	<p>Gadzhiev, Elnur Dumkina, Marina Sharpak, Sergey</p>

## ORGANISATION STRUCTURE MIDDLE EUROPE INVESTMENTS

### *Shareholder structure*

